

Raymond N. Herb, Jr.
Michael L. Myer
Susan M. Herb
Kathleen M. Herb
Jeffrey A. Carpenter



Realtors / Since 1927
(717) 272-5637

FOR SALE in Lebanon County
702 South 12th Street, Lebanon, PA 17042



- ◆ *3,668 Square Feet*
- ◆ *Completely Renovated*
- ◆ *Standard Electric Service*
- ◆ *Heat Pump and Central Air*
- ◆ *Public Water and Sewer*
- ◆ *Property located along Lebanon City Bus Route*

- ◆ *Brick, Masonry, Wood Siding*
- ◆ *Zoned Commercial Neighborhood*
- ◆ *W/Paved Off-Street Parking*
- ◆ *Great Corner Property Location*
- ◆ *Property Situate on .31 Acres*
- ◆ *7/1/23 Real Est. Taxes \$11,723/YR*

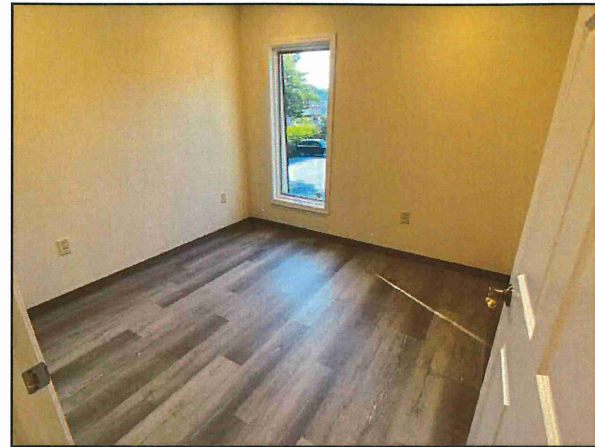
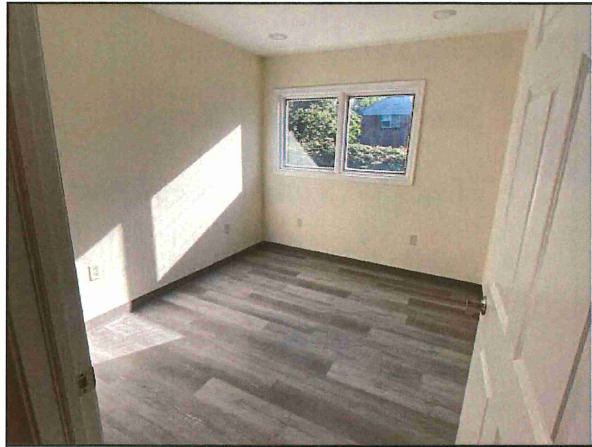
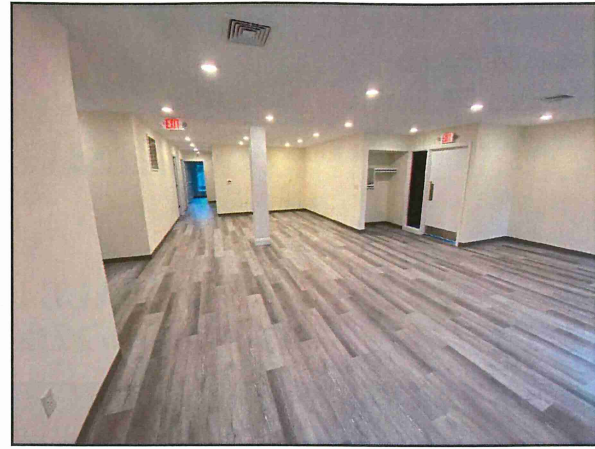
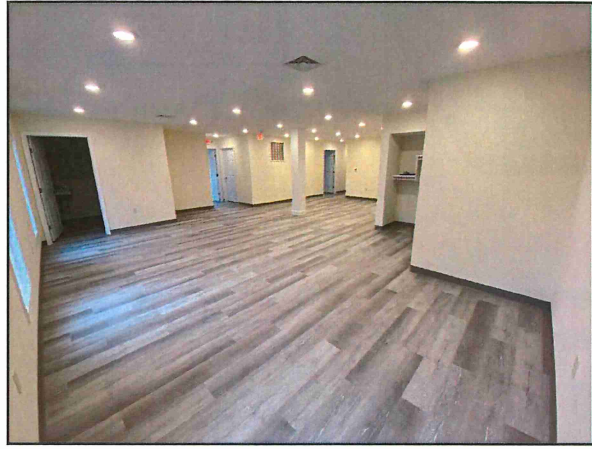


This property is located in the city of Lebanon and consists of completely renovated upper and lower levels. Each level has separate utilities, HVAC systems, as well as separate and common entrances. Commercial Neighborhood zoning allows for a wide variety of uses including residential, office, retail, and many others. If this fits your requirements, please give us a call or send an email to info@gellerrealestatecompany.com.

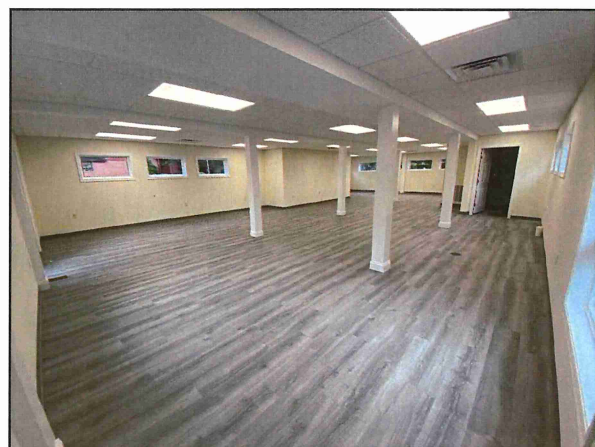
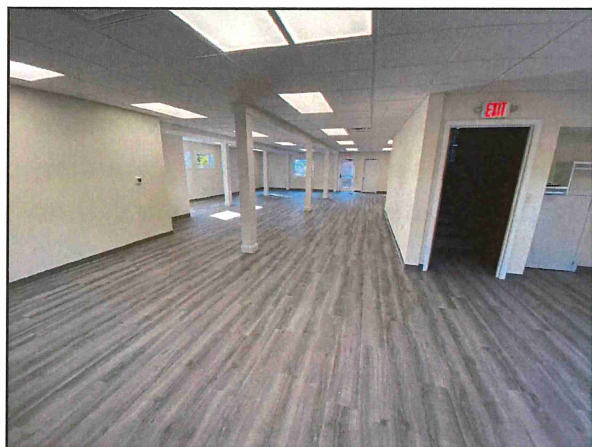
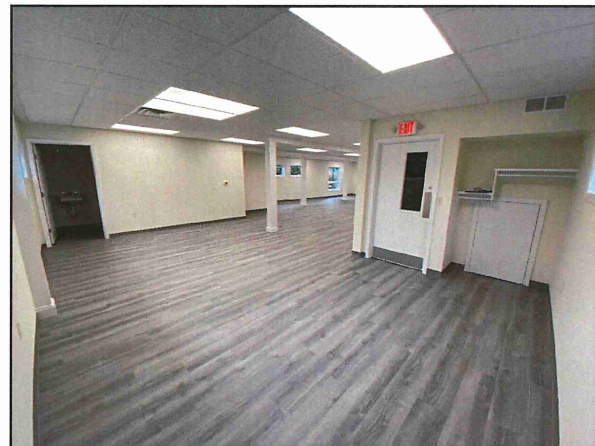
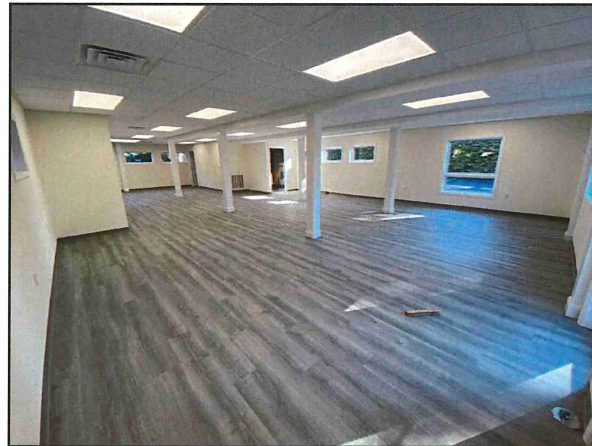
Call Ray Herb, Jr. or Mike Myer at (717) 272-5637
Commercial/Industrial Sales and Leasing

Mailing Address: 749 E. Cumberland Street, Lebanon, PA 17042

Upper Level



Lower Level



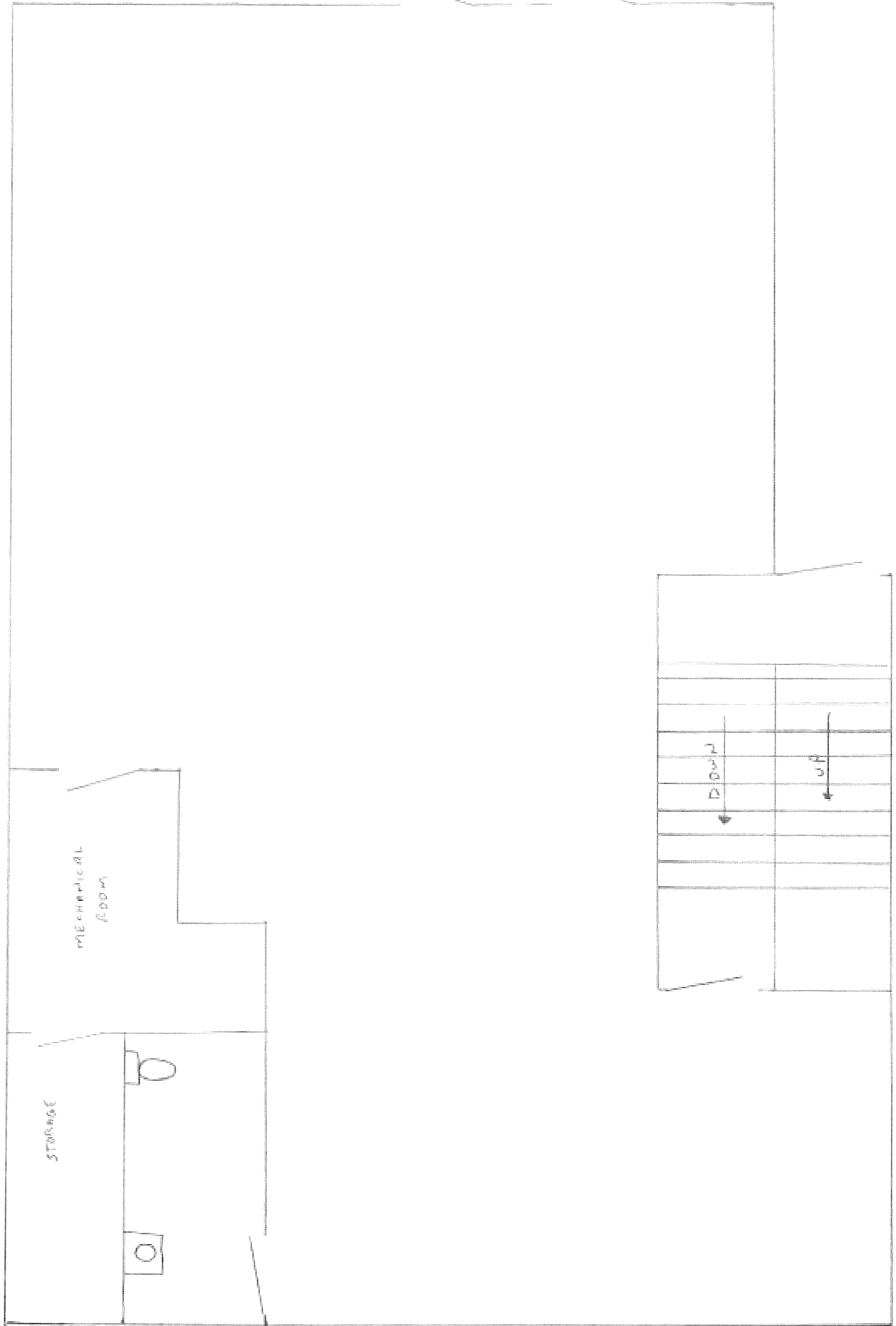
Upper Level



Not to Scale

Lower Level

LOWER LEVEL



Not to Scale